

MEMORANDUM

State of Alaska DEPARTMENT OF FISH AND GAME

TO: Lowell Fair
Regional Supervisor

DATE: January 30, 2019

FILE NO:

FROM: Dan Gray
Fish and Game Coordinator
and
Quinn Smith
Fisheries Biologist III
Division of Commercial Fisheries

TELEPHONE NO: 907-465-6393
907-465-6393

FAX NO: 907-747-6693

SUBJECT: 2017-18 Shrimp Pot
Fishery Summary

The 2017/18 Southeast pot shrimp fishery began October 1, 2017. A season-opening news release was issued on September 1, 2017, announcing fishing seasons, fishing periods, lawful gear, vessel registration, GHLS, catcher-processor reporting requirements, fish ticket requirements, voluntary logbook program plans, and other information. The fishery targeted a GHL of 530,570 lb. In comparison with the prior season, GHLS were decreased by 4% overall. GHLS were increased by 34% in District 6 and decreased by 47% in District 11-B/C, and by 19% in District 13-C. Districts 14 and 16 were closed. The GHL reductions and management measures were implemented following a detailed review of shrimp population stock status and a consultation with shellfish research and management biologists.

A total of 256 permits were issued by CFEC for the 2017 calendar year. A total of 109 fishing vessels registered for the 2017/18 season. Forty-six fishermen, or 42% of the fleet, were registered as catcher-processors. A total of 107 CFEC permit holders fished and made 942 landings over the course of the season (Table 1).

The total pounds landed for the season was 576,485, 109% of the adjusted GHL. The bulk of the harvest came from the southern half of the region (Table 1). The average pounds per permit was 5,388 (Table 1). CFEC reports preliminary total gross earnings of \$2,425,675 based on a total harvest of 568,444 lb for the 2017 calendar year, which equates to a reported average exvessel price of \$4.27 per lb. The average annual earnings per permit holder is reported by CFEC as \$23,100.

The 2017/18 season progressed rapidly with 96% of the harvest taken in October and 99% of the harvest taken by the end of February. District opening lengths varied from 3 days in Section 13-C to 29 days in District 8. This excludes Districts 4, 5, and 15, all of which closed by regulation on February 28 and then reopened for the summer season.

Table 1. Registration Area A (Southeast Alaska) commercial shrimp pot harvest, effort, and value, 1996/97 through 2017/18 seasons.

Season ^a	Harvest spot shrimp	Harvest coonstripe shrimp	Permits	Average Price/lb ^b	Exvessel Value	Average lbs /permit	Average Earnings /Permit
1996/97	944,695	94,261	203	\$2.85	\$2,958,433	5,118	\$14,574
1997/98	802,673	92,361	200	\$2.61	\$2,336,169	4,475	\$11,681
1998/99	761,485	95,659	185	\$2.08	\$1,780,793	4,633	\$9,626
1999/00	790,783	83,100	154	\$2.67	\$2,329,074	5,675	\$15,124
2000/01	1,002,467	67,538	160	\$3.46	\$3,706,585	6,688	\$23,166
2001/02	977,846	79,413	169	\$1.92	\$2,028,012	6,256	\$12,000
2002/03	1,004,004	60,989	151	\$2.13	\$2,268,631	7,053	\$15,024
2003/04	1,079,319	57,989	156	\$2.14	\$2,433,713	7,290	\$15,601
2004/05	966,339	36,788	149	\$2.23	\$2,240,847	6,732	\$15,039
2005/06	946,891	31,148	143	\$2.77	\$2,707,043	6,839	\$18,930
2006/07	920,791	21,865	136	\$2.79	\$2,633,418	6,931	\$19,363
2007/08	706,629	21,269	110	\$2.79	\$2,031,611	6,617	\$18,469
2008/09	564,357	19,567	95	\$3.06	\$1,787,371	6,147	\$18,814
2009/10	637,265	19,235	109	\$2.64	\$1,735,255	6,023	\$15,920
2010/11	530,721	26,093	109	\$2.81	\$1,562,276	5,108	\$14,333
2011/12	546,096	18,397	110	\$3.00	\$1,694,503	5,132	\$15,405
2012/13	586,626	28,651	106	\$3.42	\$2,103,618	5,805	\$19,845
2013/14	537,627	24,819	109	\$5.19	\$2,921,287	5,160	\$26,801
2014/15	521,740	23,382	103	\$4.58	\$2,498,355	5,292	\$24,256
2015/16	498,396	12,103	95	\$4.30	\$2,195,146	5,374	\$23,107
2016/17	566,523	16,177	108	\$4.30	\$2,506,003	5,395	\$23,204
2017/18	564,015	12,443	107	\$4.27	\$2,461,476	5,387	\$23,003
Averages							
1996/97-2016/17	756,823	44,324	136	\$3.04	\$2,307,531	5,893	\$17,632
2007/08-2016/17	569,598	20,969	105	\$3.61	\$2,103,542	5,605	\$20,015

^a Season = October 1 thru September 30.^b Based on CFEC (annual) data.

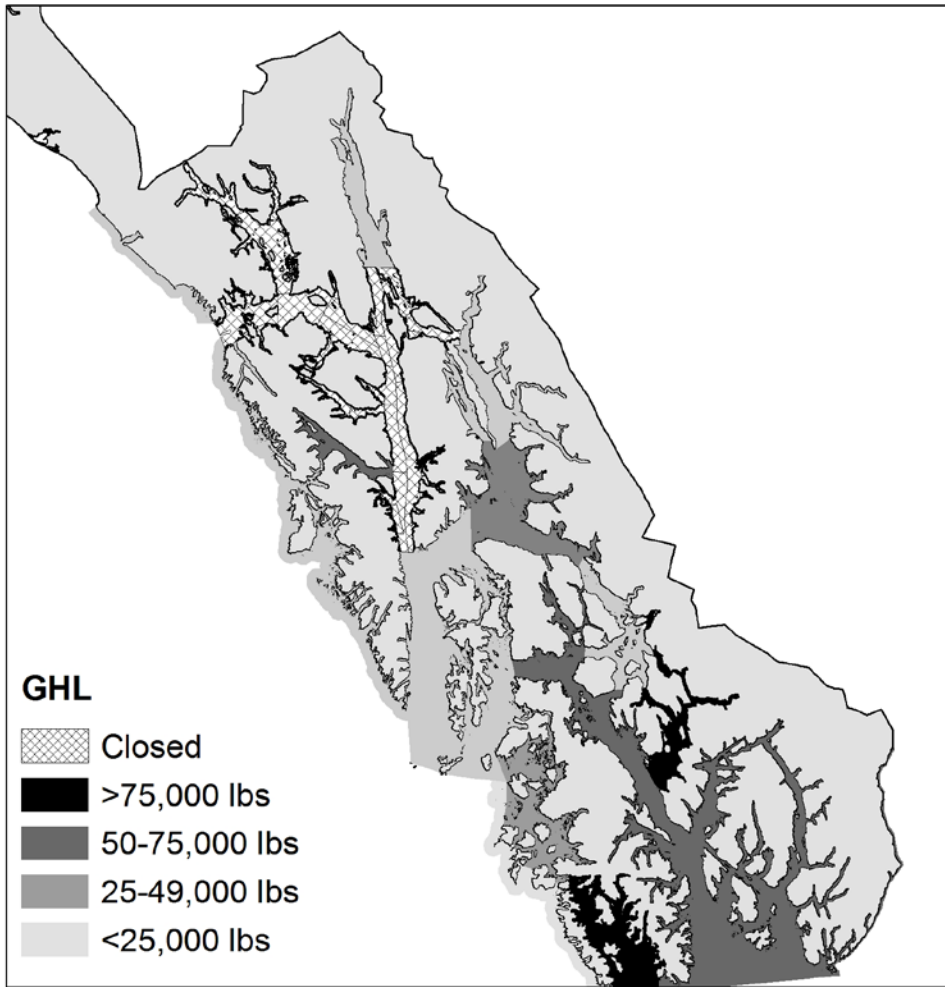


Figure 1. Shrimp pot fishery GHL by location in Registration Area A, Southeast Alaska, 2017/18.